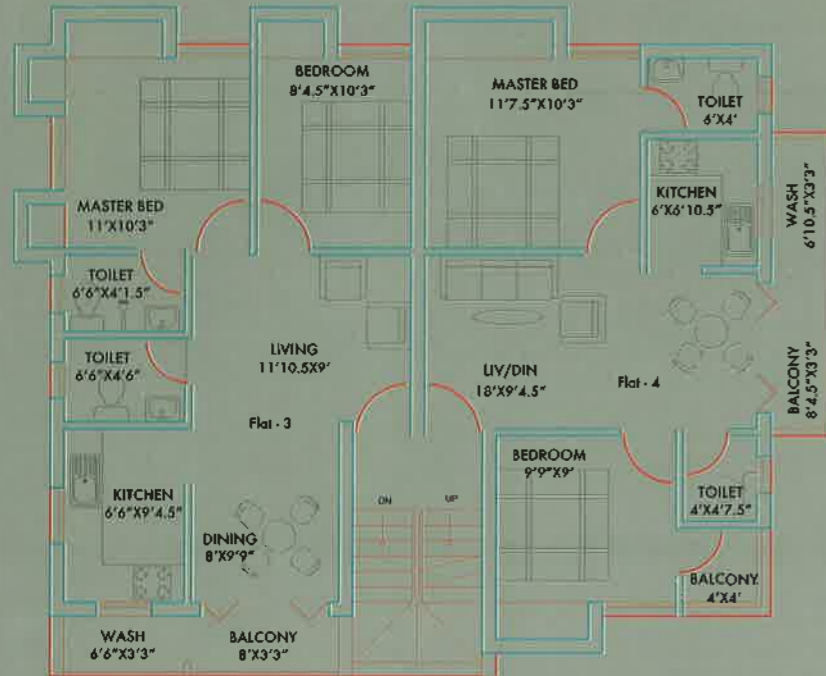


## AMENITIES

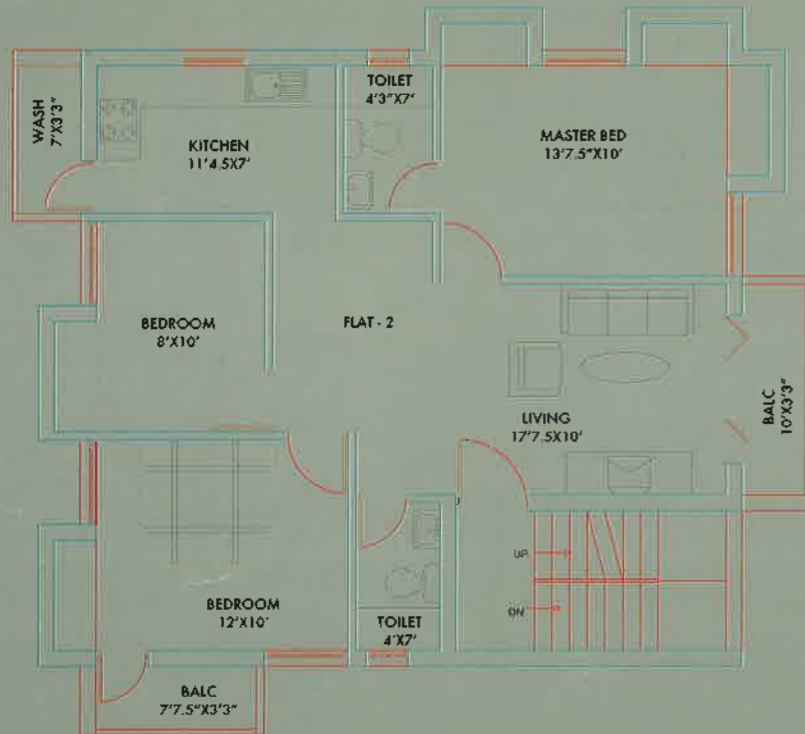
- Water treatment plant • Solar water heaters • Intercom facility for security and between flats • Security cabin at entrance to complex • Children's play equipment • Badminton court or basket ball ring • Common servant toilet • Covered / open car parking • Paved surrounding areas / Landscaping • Telephone wiring in living and master bed & Internet wiring

A representative Sketch of two & three bedroom apartments.

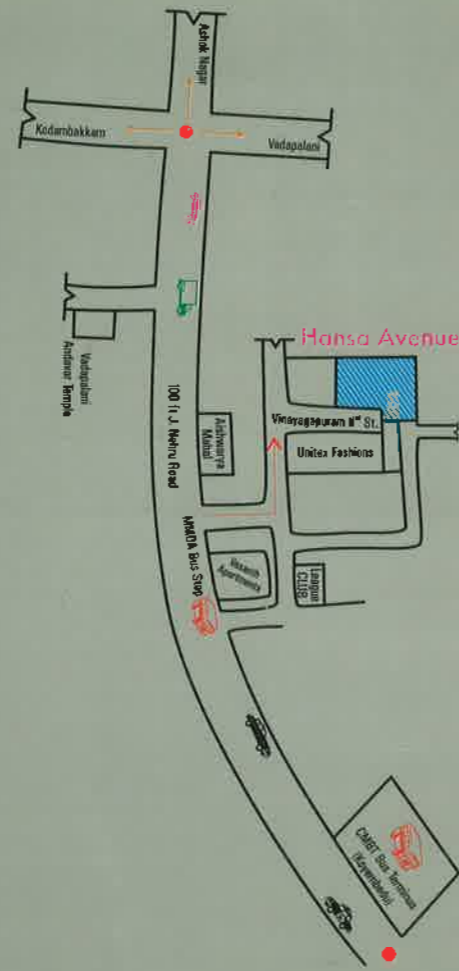
### Two Bedroom Apartment



### Three Bedroom Apartment



### Location Plan



Not to scale

# HANSA AVENUE

ARUMBAKKAM



COME HOME TO SMART ARCHITECT DESIGNED APARTMENTS!

**HANSA Estates**

1 Floor Sharika Mansion | No.2 | Lake Area 1st Street | Nungambakkam | Chennai - 600 034.  
Ph: 42210350/348/300 | Cell: 98404 64567, 98407 08073 | email: sales@hansaestates.com

# HANSA AVENUE



Architect impression only. Specifications subject to change.

Location : No. 32 /49, Vinayagapuram II St, Arumbakkam, Chennai 600 106. (Behind Aishwarya Mahal)

*Your own home in the heart of Chennai at Arumbakkam, these architect designed apartments are built over 7.3 grounds, with thoughtful features added to make your life comfortable.*

## S P E C I F I C A T I O N S

Door Frame	: Seasoned country wood	Wash basin	: One white colour wash basin of standard make in dining.
Shutters	: Windows -Commercial Ply Flush Shutters,	Bath / Toilet	: One EWC in attached toilet and one IWC in common toilet both in white colour with hot & cold water mixing and one shower each; white colour wash basin in toilets
Door	: Well-Designed main door, others flush doors	Plumbing	: All water supply and drainage lines by rigid PVC pipes
Window Frame	: Seasoned country wood	Water	: Bore well / metro water piping
Flooring	: Entire flat area with ceramic tiles	Electrical	: Adequate electrical point in each flat; sufficient number of common lights around the campus
Dadoing	: Bathroom 6' from floor level Kitchen 2' from platform Skirting 4" from floor level	Painting	: Walls external -Two coats of cement paint with one coat of primer. Walls internal -Two coats of distemper with one coat of primer.
Kitchen	: Granite platform & SS sink; open shelf with Cuddapah slab one loft		
Bedrooms	: Open wardrobe with RCC slabs in all Bedrooms, one loft above wardrobe in all Bedrooms; provision for A/C in bedrooms		